

THREADED, BLANK FLANGE



Design features

- Made of ductile iron, epoxy powder coated
- Flange sized according to EN 1092-2 and drilled in accordance with EN 1092-2 | PN 10 standard; PN 16 for DN 200 to DN 300 please specify on order - other standards on request

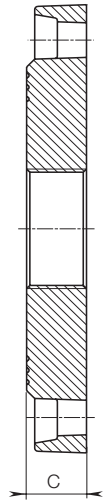
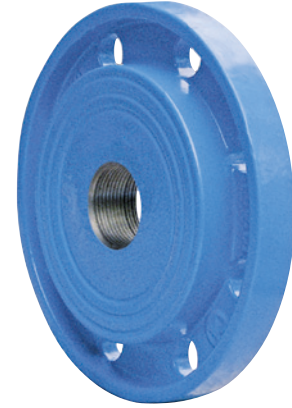
DN	MOP (PN)	Thread No. 8100						Thread No. 8100L							
		1"	1¼"	1½"	2"	2½"	3"	4"	1"	1¼"	1½"	2"	2½"	3"	4"
40	10														
50															
60															
65															
80															
100															
125															
150															
200															
250															
300															

Threaded flange

No. 8100

No. 8100L

with internal thread ISO 228



DN	MOP (PN)	C	Weight No. 8100							
			1"	1¼"	1½"	2"	2½"	3"	4"	
40	10	19			1,80	1,70				
50			2,30	2,20	2,20	2,10				
60						3,00				
65			3,20	3,10	3,00	3,00	2,70			
80			3,60	3,50	3,40	3,40	3,40	2,90		
100		4,30	4,20	4,20	4,20	3,90	3,70	3,30		
125		5,40	5,50	5,50	5,30	5,20	5,10	4,70		
150		7,00	6,90	6,90	6,80	6,70	6,60	6,20		
200		20	11,50	11,30	11,30	11,00	10,60	10,30		
250		22			16,20	16,00	15,00			
300	25				23,10					

DN	MOP (PN)	C	Weight No. 8100L						
			1"	1¼"	1½"	2"	2½"	3"	4"
50	10	32	2,70	2,60	2,60	2,50			
60			3,40	3,20	3,00	2,80	2,60		
65			3,40	3,20	3,00	2,80	2,60		
80			4,00	3,90	3,90	3,90	3,80	3,40	
100			5,90	5,70	5,70	5,50	5,20	4,80	4,50
125		8,20	8,10	8,10	7,90	7,50	7,00	6,60	
150		9,50	9,30	9,20	9,10	8,70	8,50	8,10	
200		15,50	15,40	15,30	15,10	14,80	14,50	14,20	

Design features

- Made of ductile iron, epoxy powder coated
- Flange sized according to EN 1092-2, and drilled in accordance with EN 1092-2, | PN 10 standard; PN 16 for DN 200 to DN 400 please specify on order - other standards on request
- Other nominal diameters on request

DN	MOP (PN)	C	Weight
40	10	19	2,00
50			2,90
60			2,80
65			3,80
80			4,00
100		4,60	
125		5,70	
150		7,60	
200		20	11,40
250		22	17,20
300	25	25,50	
400		38,00	

Blank flange

No. 8000

