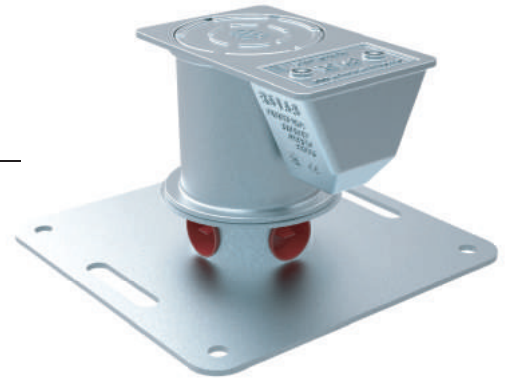


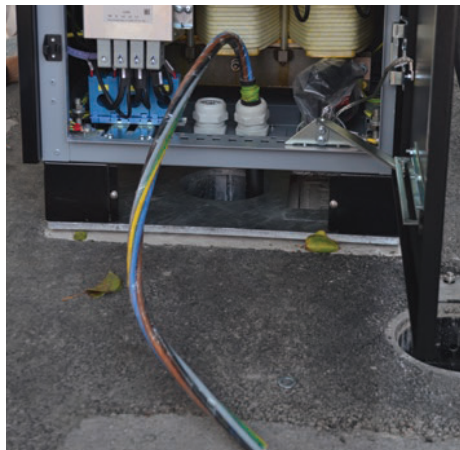
Case Study RS168 | Coventry

Project: ESB QC45 EV Charge Points, Coventry, England
Product: RS168sf sockets, Adapter Plates



RS168 | Coventry...

The uptake of electric vehicles among drivers is increasing steadily, and with the growing demand for EV charging points, Coventry City Council have been replacing slow and unreliable chargers with new rapid chargers. In 2018, ESB working with Transport for London (TfL) oversaw the installation of their QC45 Rapid Charge EV units in IPL group's RS168sf sockets fitted with adapter plates designed to suit the units. These shallow foundation sockets provide four duct entry points for cabling and all civil works can complete prior to installing the unit. RETENTION SYSTEM™ socket foundations provide adaptability to the evolving technology and ensure EV charge points can be removed and replaced without the need for repeat excavations and expense. Other IPL group products used to simplify the installation and maintenance of these EV charge points include impactable bollards to protect the unit and loop boxes to access the loop cables used to detect vehicles parked in the bay.



**INFRASTRUCTURE
SOLUTIONS**
ev charge points



**RETENTION
SYSTEM™**

www.retention-system.com

Further information on the RETENTION SYSTEM sockets for post installation is available at www.retention-system.com
Measurements and weights are approximate. The designs are the property of Innovative Products Ltd (IPL group) and may not be reproduced without express permission. Innovative Products reserve the right to amend specifications or to withdraw models without prior notice. © April 2019.



RETENTION SYSTEM™

intelligent foundation solutions