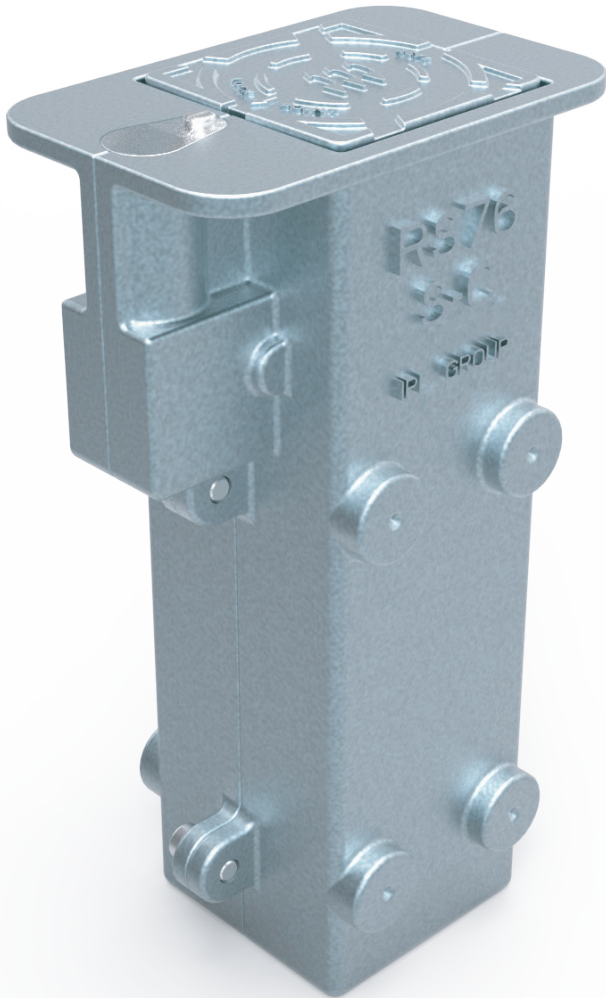


## Intelligent Foundation Solutions

**RETENTION SYSTEM sockets are intelligent foundation solutions for the installation and maintenance of posts.**

Essential to sustainable infrastructure design, they add value through improved asset management and performance, reduced operational costs and deliver environmental, health and safety benefits.



### world leading design...

- Designed and tested to international standards
- Approved and used throughout the world
- High-strength, reusable design survives vehicle impact
- Solution for knock-down and access-control locations
- Eliminates repeat excavation, disruption and expense
- Shallow foundation options for congested sites
- Easy to handle, adjust and install on site
- Facilitates electrical cabling at ground level
- Simplifies project, contractor & site management
- Assists maintenance and seasonal schedules
- Supports health and safety work practices
- Promotes environmental policies and targets

### Sustainable Infrastructure Design



## RS76x76

RS76x76 socket for the installation of 76x76mm (3x3in) posts including signs, bollards, barriers, bicycle stands...

# RETENTION SYSTEM

sockets for post installation

[www.iplgroup.com](http://www.iplgroup.com)

- » Facilitates Passive Safety design to EN12767
- » Foundation size and specification to EN40 & BD94/07
- » Product tested and load rated to EN124 B125

IPL group | +353 (0) 41 983 2591

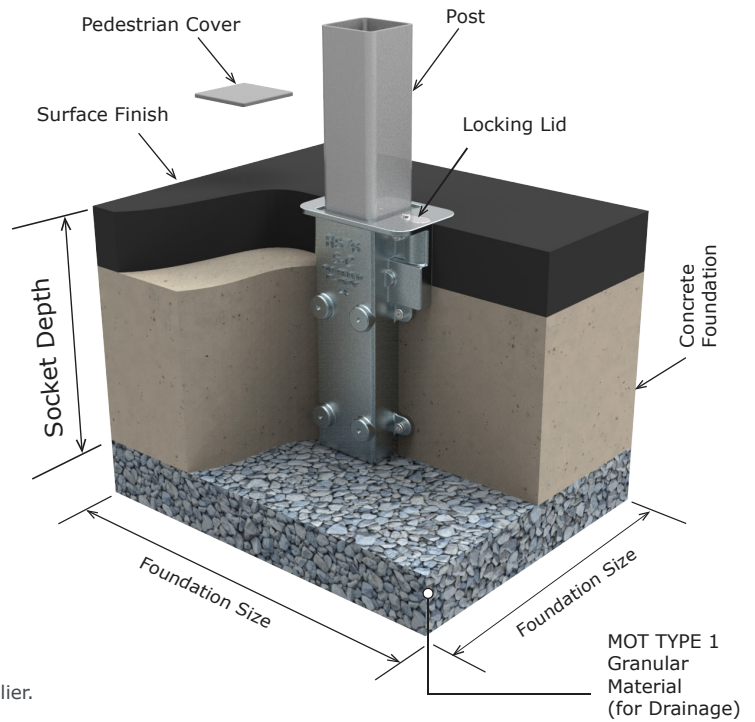




# RS socket installation & specification...

The **RS socket** should be set into concrete generally in accordance with International Standards or good Codes of Practice for the installation of posts.

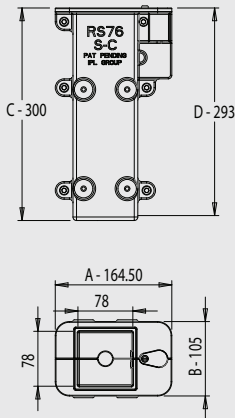
1. Prepare hole at least 75mm deeper than the overall height of the **RS socket**.
2. Compact at least 75mm of MOT type 1 granular material in base of hole.
3. Position **RS socket** in centre of hole.
4. Rotate the **RS socket** head into the required orientation.
5. Loosen locking lid, set-screw and remove pedestrian cover.
6. Install a levelling post (stump pole) in the **RS socket**, fasten the locking set-screw and replace the locking chamber lid.
7. Surround with the required amount of concrete (ST4 mix or stronger). Use stump pole to achieve a vertical level.
8. Once vertical level is achieved, compact concrete.
9. Once concrete has been compacted and has begun to cure, carefully remove stump pole and replace the pedestrian cover.
10. Replace the locking lid and secure in position. Finish footway with required surface when concrete has cured.



See **RS socket** installation guide for foundation guidelines  
For detailed foundation sizing on specific site conditions contact your supplier.

### RS76x76 socket for the installation of 76x76mm (3x3in) posts

Ref No:	Base Type	A (mm)	B (mm)	C* (mm)	D** (mm)	Weight (kg)
<b>RS76x76x300</b>	standard [flat]	164.5	105	300	293	7.5



**Options:** rs stump pole

## RS76x76

**C\*** RS socket foundation depth  
**D\*\*** post insertion depth

Technical drawings for all RS sockets available from IPL group.

*Drawings not to scale, illustrations, technical data, dimensions and weights are subject to alteration without notice.*

### Material Specification:

Head - Body:	Ductile Iron (EN1563)
Locking Lid:	Stainless Steel (304 Grade)
Pedestrian Plug:	PE - Polypropylene
Setscrew:	M10 A2 Stainless Steel
Assembly Screws:	M8 A2 Stainless Steel
Finish:	Electro Zinc Plated

