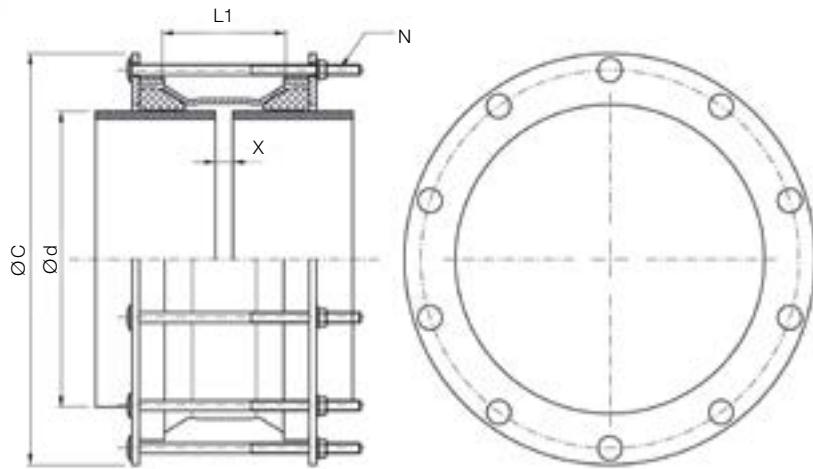


# MULTISIZE M10

## SINGLE BOLT COUPLING



DN	Ø d		MOP (PN)	L1	Max. External Dimension Ø C	Compression Bolts Quantity N	Gap X		Weight	
	Min.	Max.					Max.	Min.		
350	340	370	6-10-16	170	546	10	60	20	35	
	365	395	6-10-16		571				37	
400	390	420	6-10-16		596				40	
	410	440	6-10-16		616				42	
450	438	468	6-10-16		644	12			45	
	465	495	6-10-16		671				47	
500	490	520	6-10-16		696				14	49
	518	548	6-10-16		724					53
600	590	620	6-10-16		796	16			58	
	620	650	6-10-16		826				60	
	652	676	6-10-16		819				62	
700	680	704	6-10-16		847	18			65	
	700	724	6-10-16	867	67					
	726	750	6-10-16	893	72					
	754	778	6-10-16	921	75					
800	792	816	6-10-16	959	20	79				
	806	830	6-10-16	973		82				
	824	848	6-10-16	991		83				
	856	880	6-10-16	1023		85				
900	882	906	6-10-16	1049	22	88				
	902	926	6-10-16	1069		89				
	934	958	6-10-16	1101		92				
	960	984	6-10-16	1127		95				
1000	996	1020	6-10-16	1163	24	97				
	1016	1040	6-10-16	1183		100				
	1036	1060	6-10-16	1203		102				
	1068	1092	6-10-16	1235		104				
	1100	1124	6-10-16	1267		108				
	1116	1140	6-10-16	1283		109				
1200	1140	1164	6-10-16	1307	26	111				
	1180	1204	6-10-16	1347		115				
	1206	1230	6-10-16	1373		117				
	1244	1268	6-10-16	1411		119				

The data concerning the min. and max. gap is calculated on the minimum outside diameter of the product's range  
 Multisize series and wide range steel fittings provide the maximum hydraulic seal,  
 however they do not restrain axial pipes movement (for this type of products please refer to the MULTIGRIP section)