

HAKU SADDLE

For PE and PVC pipes



Design features

- For **PE pipes** according to EN 12201 and DIN 8074 and **PVC pipes** according to EN ISO 1452-2
- The HAKU seal is in full contact with the entire diameter of the PE or PVC pipe and is glued onto the saddle for ease of assembly
- Several concentric seals with increasing diameter surround the outlet, relieving pressure exerted upon the drill hole and protects it from deformation
- The protective layer on PE pipes should be removed prior to mounting the saddle
- No. 5250 for drilling without pressure

Material | Technical features

- 1 **Saddle body** made of ductile iron, epoxy powder coated
- 2 **Seals** made of elastomer
- 3 **Bolts** (Molybdenum-coated) and **washers** made of stainless steel
- 4 **Corrosion protection ring** made of elastomer

Suitable accessories

Drilling machine: No. 5800, No. 5805

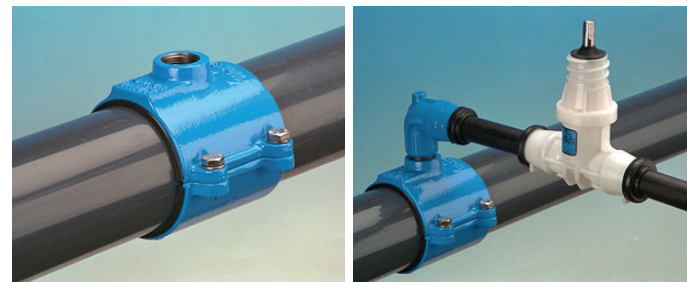
No. 5250



| Order No. | Pipe Ø | MOP (PN) | Internal thread outlet ISO 228 | | | |
|-----------|--------|----------|--------------------------------|-----|-----|----|
| | | | 1" | 1¼" | 1½" | 2" |
| 5250 | 40 | 16 | | | | |
| | 50 | | | | | |
| | 63 | | | | | |
| | 75 | | | | | |
| | 90 | | | | | |
| | 110 | | | | | |
| | 125 | | | | | |
| | 140 | | | | | |
| | 160 | | | | | |
| | 180 | | | | | |
| | 200 | | | | | |
| | 225 | | | | | |
| | 250 | | | | | |
| | 280 | | | | | |
| | 280* | | | | | |
| | 315 | | | | | |
| | 315* | | | | | |
| | 355* | | | | | |
| | 400* | | | | | |
| | 450* | | | | | |
| 500* | | | | | | |
| 630* | | | | | | |

* Supplied as saddle piece with strap

Application examples



HAKU SADDLE

For PE and PVC pipes

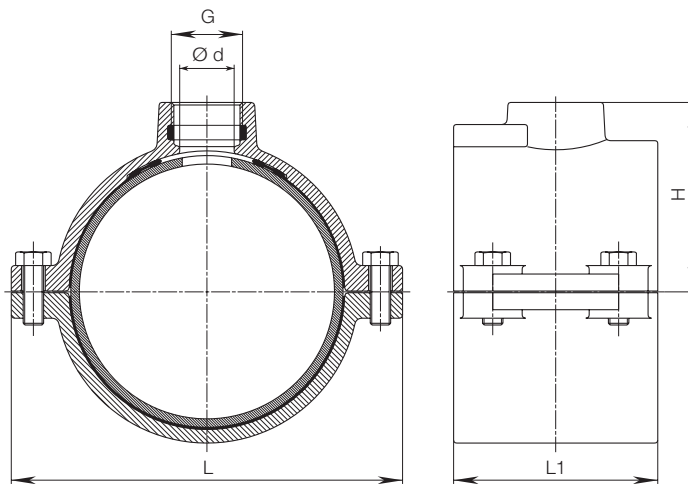


| Ø Pipe | G ISO 228 | Ø d | H | L | L 1 | Weight |
|--------|--------------|-----|-----|-----|-----|--------|
| 40 | 1" | 27 | 42 | 98 | 70 | 0,95 |
| 50 | 1" | 27 | 56 | 110 | 80 | 1,20 |
| 63 | 1" | 27 | 57 | 124 | 100 | 1,80 |
| | 1¼" | 33 | 62 | | | 2,00 |
| | 1½" | 40+ | 62 | | | 1,90 |
| 75 | 2" | 40+ | 68 | 135 | 110 | 2,10 |
| | 1" | 27 | 63 | | | 2,15 |
| | 1¼" | 33 | 68 | | | 2,25 |
| 90 | 1½" | 40 | 68 | 150 | 110 | 2,20 |
| | 2" | 50 | 73 | | | 2,30 |
| | 1" | 27 | 71 | | | 2,60 |
| 110 | 1¼" | 33 | 75 | 170 | 120 | 2,70 |
| | 1½" | 40 | 75 | | | 2,60 |
| | 2" | 50 | 80 | | | 2,70 |
| 125 | 1" | 27 | 81 | 192 | 120 | 3,60 |
| | 1¼" | 33 | 85 | | | 3,60 |
| | 1½" | 40 | 85 | | | 3,80 |
| 140 | 2" | 50 | 90 | 208 | 120 | 3,60 |
| | 1" | 27 | 87 | | | 3,70 |
| | 1¼" | 33 | 93 | | | 3,70 |
| 160 | 1½" | 40 | 93 | 230 | 120 | 4,15 |
| | 2" | 50 | 98 | | | 4,10 |
| | 1" | 27 | 96 | | | 4,40 |
| 180 | 1¼" | 33 | 100 | 262 | 120 | 4,30 |
| | 1½" | 40 | 100 | | | 4,60 |
| | 2" | 50 | 106 | | | 4,50 |
| 200 | 1" | 27 | 106 | 282 | 120 | 5,90 |
| | 1¼" | 33 | 111 | | | 6,10 |
| | 1½" | 40 | 111 | | | 6,30 |
| 225 | 2" | 50 | 116 | 310 | 120 | 6,20 |
| | 1" | 27 | 125 | | | 8,00 |
| | 1¼" | 33 | 125 | | | 8,00 |
| 250 | 1½" | 40 | 127 | 347 | 180 | 8,10 |
| | 2" | 50 | 127 | | | 8,10 |
| | 1" | 27 | 132 | | | 8,10 |
| 280 | 1¼" | 33 | 132 | 408 | 180 | 7,80 |
| | 1½" | 40 | 137 | | | 8,30 |
| | 2" | 50 | 137 | | | 8,10 |
| 315 | 1" | 27 | 143 | 408 | 180 | 9,10 |
| | 1¼" | 33 | 145 | | | 9,40 |
| | 1½" | 40 | 145 | | | 9,70 |
| 355 | 2" | 50 | 150 | 270 | 120 | 9,60 |
| | 1" | 27 | 156 | | | 11,00 |
| | 1¼" | 33 | 156 | | | 11,30 |
| 400 | 1½" | 40 | 163 | 270 | 120 | 11,50 |
| | 2" | 50 | 163 | | | 12,00 |
| | 1" | 27 | 176 | | | 3,80 |
| 450 | 1¼" | 38 | 176 | 235 | 120 | 3,60 |
| | 1½" | 44 | 176 | | | 3,60 |
| | 2" | 50 | 176 | | | 3,30 |
| 500 | 2" | 51 | 178 | 255 | 120 | 14,20 |
| | 1¼" | 38 | 196 | | | 3,80 |
| | 1½" | 44 | 196 | | | 3,75 |
| 630 | 2" | 51 | 196 | 255 | 120 | 3,55 |
| | 2" | 51 | 196 | | | 16,70 |
| | 1½" | 40 | 243 | | | 4,90 |
| 400 | 2" | 50 | 243 | 270 | 120 | 4,90 |
| | 1½" | 40 | 268 | | | 4,60 |
| 450 | 2" | 50 | 268 | 235 | 120 | 4,60 |
| | 1½" | 40 | 292 | | | 4,90 |
| 500 | 2" | 50 | 292 | 255 | 120 | 4,90 |
| | 2" | 50 | 342 | | | 9,50 |

No. 5250

Pipe Ø 40-315

With internal threaded outlet ISO 228, in conjunction with shut-off adapter No. 3720 for under pressure drilling



+ Drilling max. 35

*Pipe Ø 280-630 (supplied as saddle piece with strap)
Suitable only for SDR 11 PE pipes or stronger SDR class

With internal threaded outlet ISO 228, in conjunction with shut-off adapter No. 3720 for under pressure drilling

