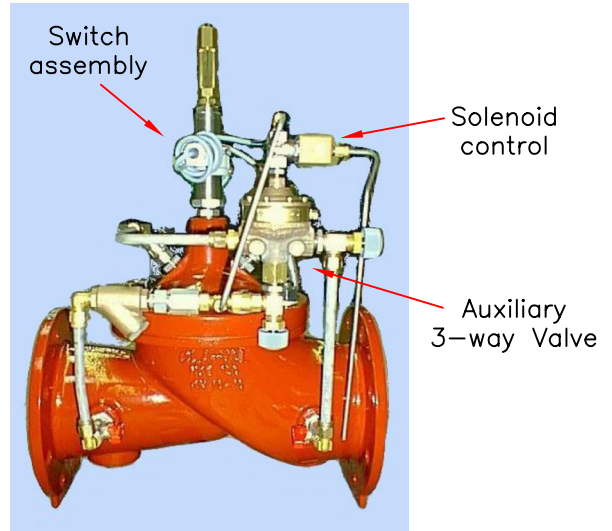




Simple, Reliable and Accurate

- Completely Automatic Operation
- Easy Adjustment and Maintenance
- Quality Approved Materials
- World Wide Support



• CLA-VAL 60-31/72 : Sequence of Operation

• Pump off

When the pump is off the Auxiliary 3-way Valve keeps the valve in a closed position.

• Starting sequence

The pump starts against a closed valve. When the working pump rate is reached the Solenoid Control gradually opens the valve to prevent pump surge.

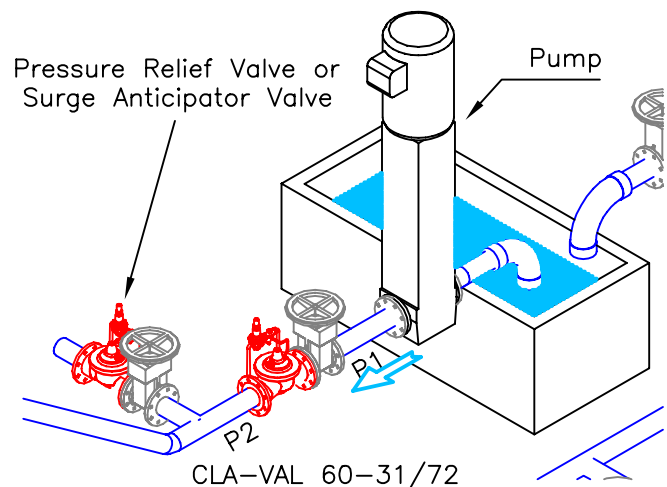
• Stopping sequence

The pump stops when the valve is totally closed. The shut-off signal de-energizes the Solenoid Control to let the valve close gradually. Meanwhile the pump is still working. When the valve is fully closed the Switch Assembly shuts the pump off.

• Emergency sequence

In case of a power failure ($P_2 > P_1$), the valve closes fast to protect the pump. The Pressure Relief Valve or Surge Anticipator Valve is usually combined with the pump control valve in order to dissipate surge pressures.

The CLA-VAL SERIES 60 Pump Control valve is a pilot-operated valve designed for installation on the discharge of pumps to prevent pipeline surges caused by the starting and stopping of pumps.



• Usual SERIES 60 Combinations

Main valve	100-04
Constant Opening/Closing Speed	
Small sizes	60-31/02
AE/GE : DN 50-100 / NGE : DN 65-150	
Large sizes	60-81
AE/GE : DN 80-400 / NGE : 100-800	
Controlled Opening/Closing Speed	60-31/72
AE/GE : DN 100-400 / NGE : DN 125-600	

Other Functions : Please Contact CLA-VAL

• More Information

	Sheet #
<input checked="" type="checkbox"/> Schematic Diagram	060001FE
<input checked="" type="checkbox"/> Quick Valve Selection	000121DE
<input checked="" type="checkbox"/> Dimensions	000122DE
<input checked="" type="checkbox"/> Pressure Ratings & Materials	000123DE
<input checked="" type="checkbox"/> Specify your Valve	061001VE

CLA-VAL

Switzerland

TEL : +41 (0) 21 643 1555 FAX : +41 (0) 21 643 1550

Web : www.cla-val.ch E-mail : cla-val@cla-val.ch

© Copyright CLA-VAL CO - USA

NUM.	060001DE
REV.	A 09/99
QUA.	HvB 09/99