

STRAWBERRY ENERGY



NOTABLE CLIENTS



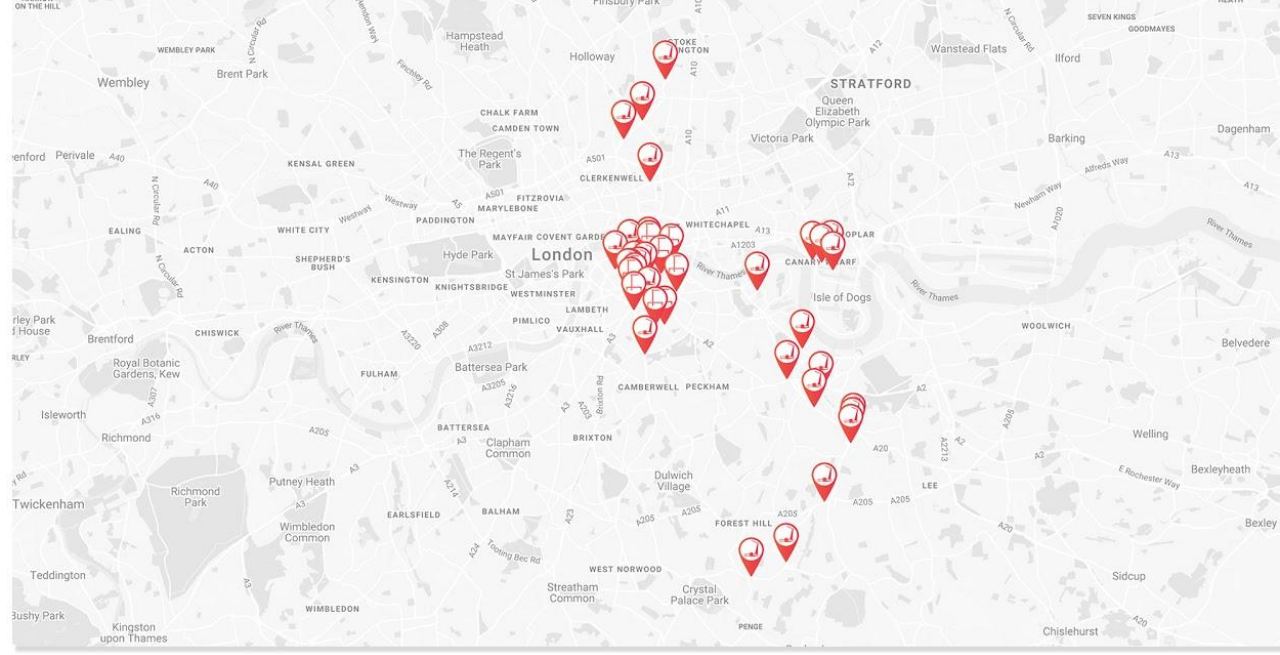
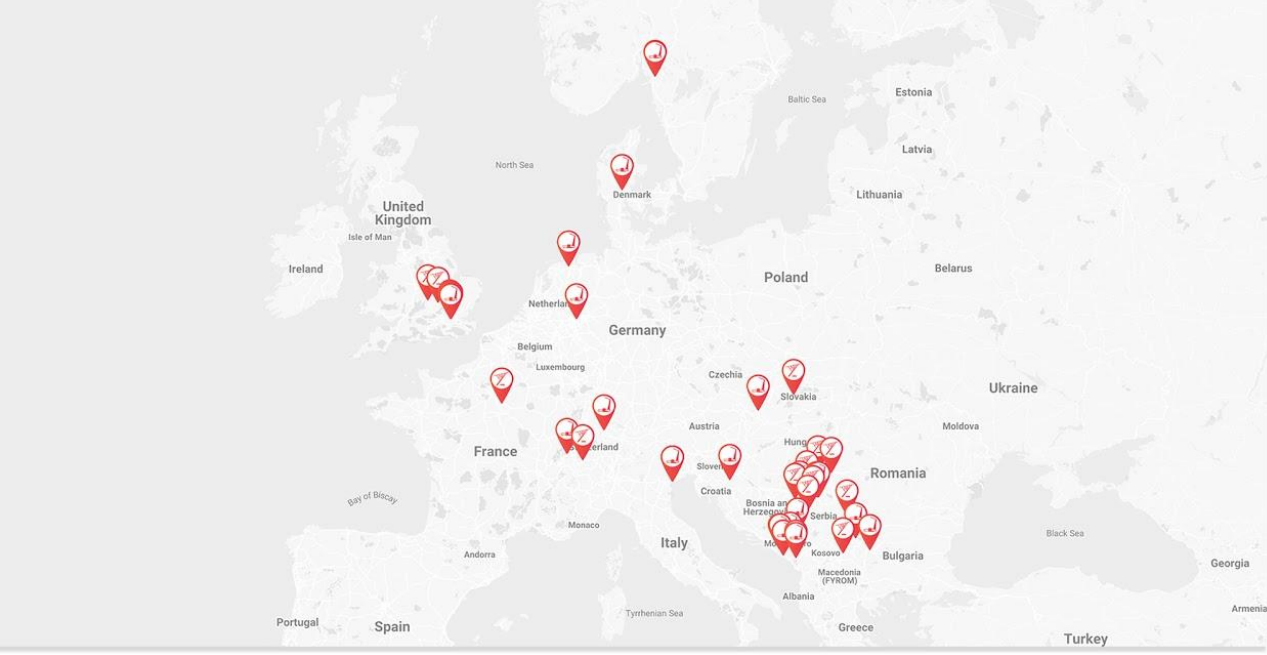
IN THE MEDIA



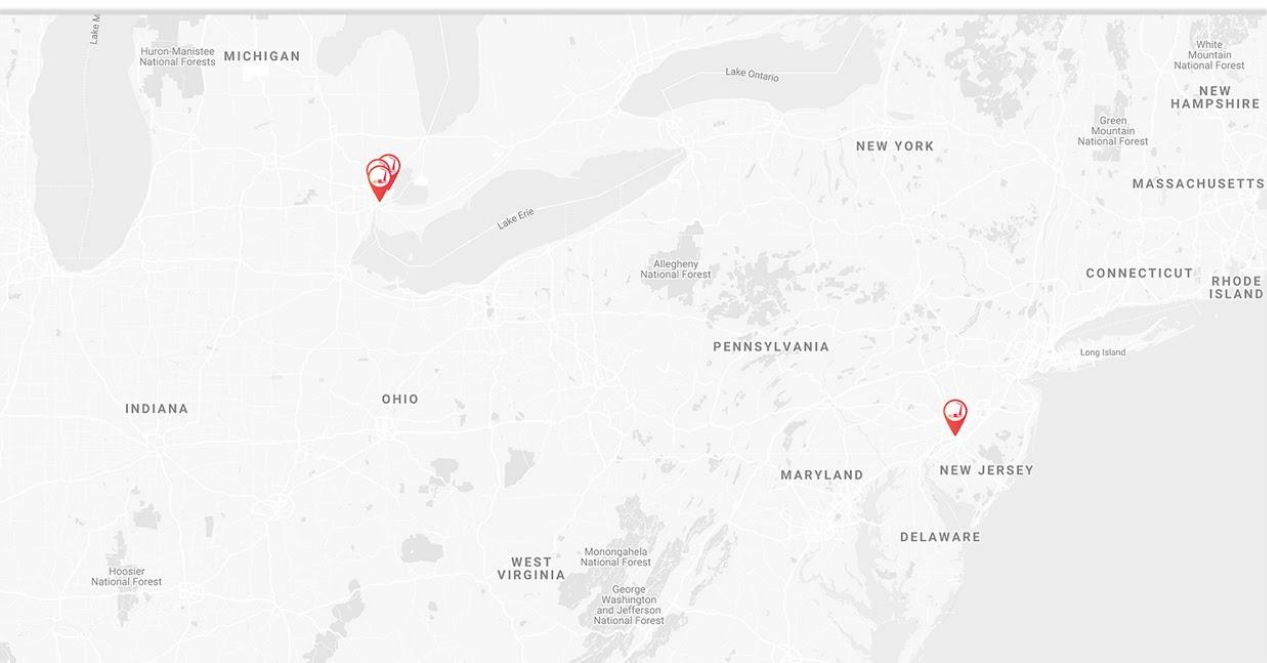
AWARDS AND RECOGNITION

- Finalist for the "World Technology Award", 2013.
- Winner of the Pilot Project and the "Cool prize" at the "Cognicity Challenge" in organization of the "Canary Wharf Group", London, 2015.
- One of the four winning innovations of the 'Connecting people and creating communities' competition run by the Institute for Sustainability in partnership with the Mayor of London's Office, and supported by EIT Digital, 2015.

REFERENCES



**PRESENT IN 17 COUNTRIES AND
OVER 30 CITIES WORLDWIDE**





BUILD SOCIAL PUBLIC SPACES WITH NEW FOCAL POINTS FOR COMMUNITY LIFE.





“Tekna is the country's largest association for people with a higher education in technology and natural sciences. Nature and technology meet in a smart bench and therefore we think it is an appropriate gift from Tekna to Halden's population.”

Øyvind Harridsleff
Tekna Halden

“The smart benches should be an attractive gathering point for users of the urban space. They will create curiosity, and provide tourists and residents with information about technology, history and events.”

Martin Vik
Head of communication and digitization in Halden municipality

Client:
City,
Foundation,
Organisation,
Innovation cluster

Town/Country:
Halden, Norway

Year:
2018



"Smart solar benches are innovative street furniture that will help cities, universities and companies create a better and safer environment adapted to the needs of people. Smart benches offer much more than chargers for phones. They also provide useful data to monitor air quality thanks to the built-in sensors."

Fiona McCluney
UN resident coordinator

Client:
Agency

Town/Country:
Podgorica, Montenegro

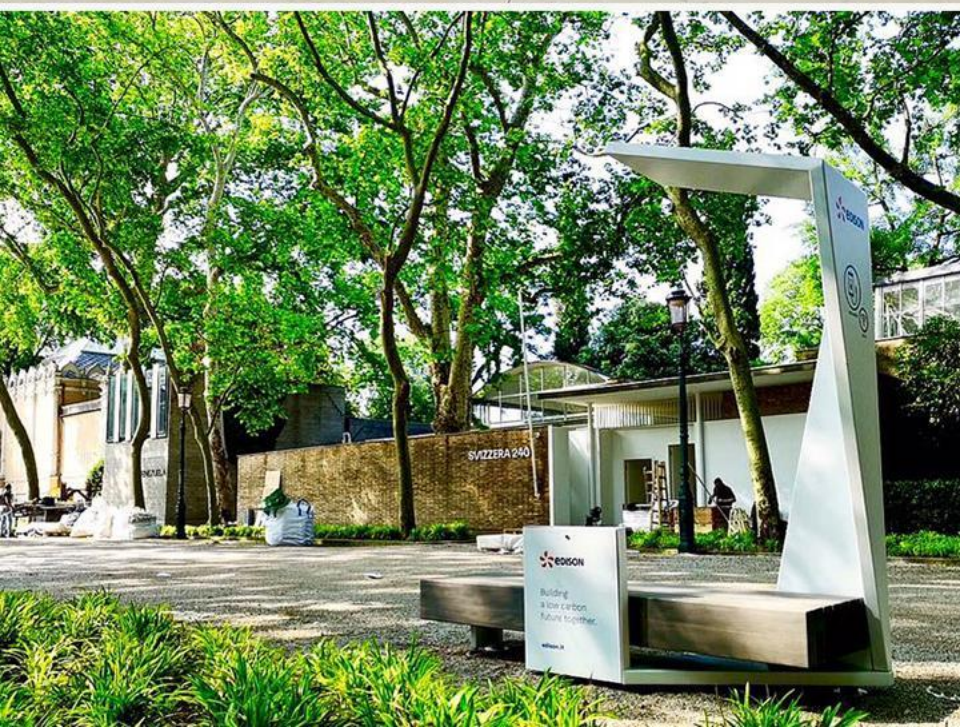
Year:
2016



Client:
Energy company

Town/Country:
Venice, Italy

Year:
2018



"We are for a world where the forms and spaces in which we live need nothing but natural energy. This is why we are constantly looking for confrontation with those who think, plan and manage spaces and functions, in order to help us conceive the best energy performance from the origin."

Paolo Quaini

Edison's Director of Energy Services Market Division



Client:
Energy Company

Town/Country:
Venice, Italy

Year:
2018

“When we find transformational projects like this one the Smart Bench that you see behind me, and working with our partner Strawberry energy, it’s really a home run not only for Ford Motor Company and our objectives, but for the people that we serve.”

Jim Vella
President of Ford Motor Company Fund,
Global



Client:
Car Company

Town/Country:
Detroit, US

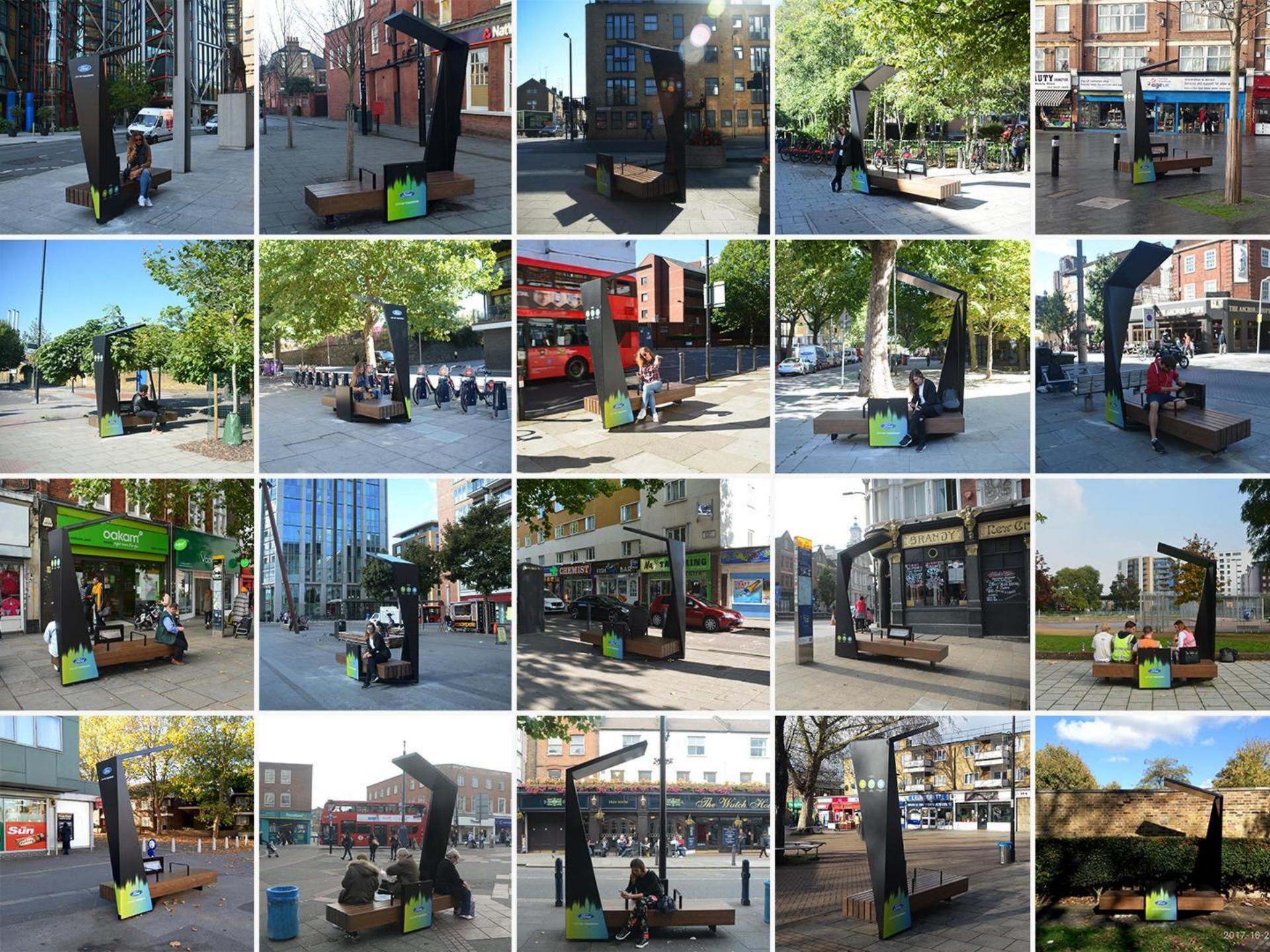
Year:
2018



Client:
Car company

Town/Country:
London, UK

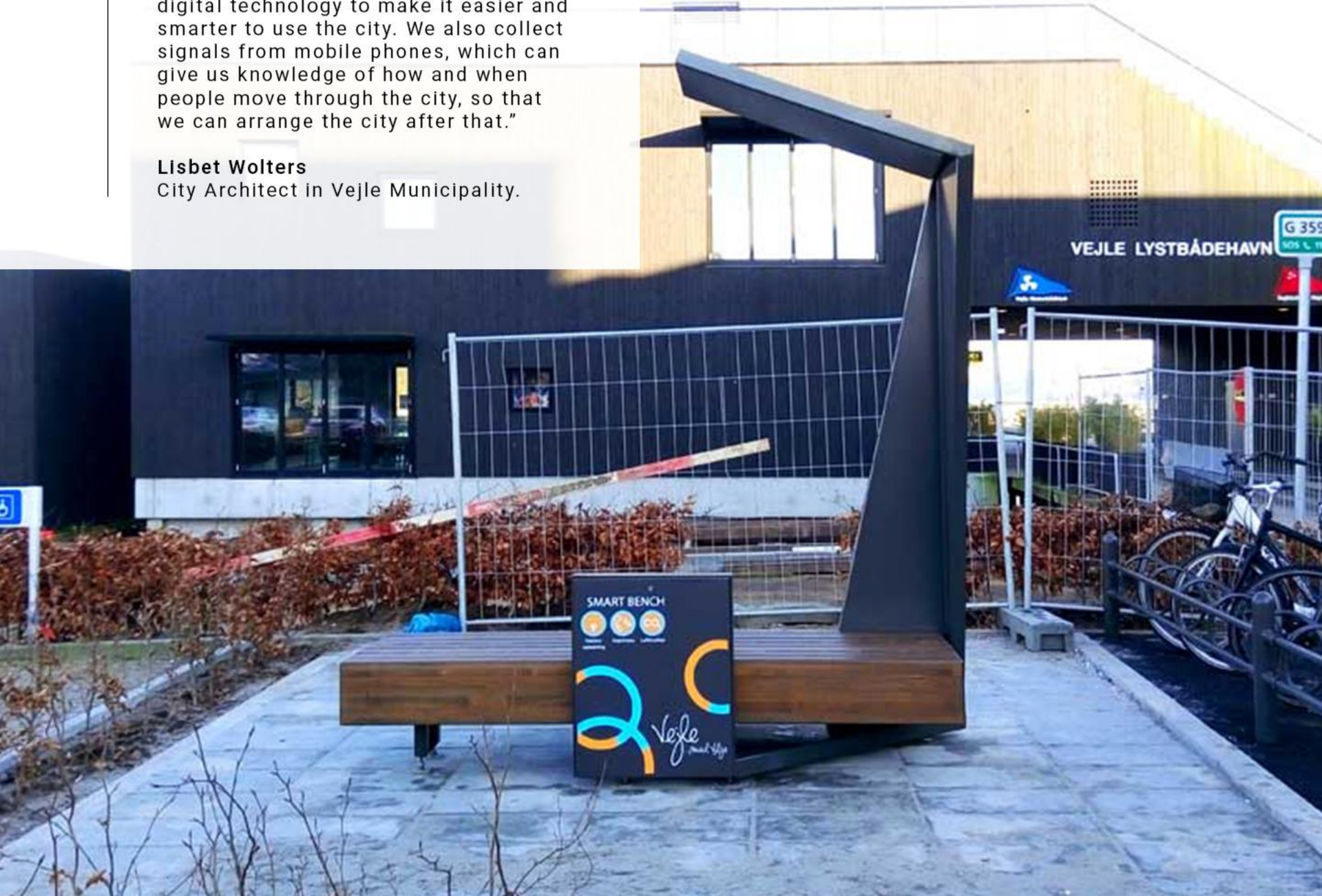
Year:
2018



“In Vejle we are in the process of using digital technology to make it easier and smarter to use the city. We also collect signals from mobile phones, which can give us knowledge of how and when people move through the city, so that we can arrange the city after that.”

Lisbet Wolters

City Architect in Vejle Municipality.



Client:

City

Town/Country:

Vejle, Denmark

Year:

2018

“We are convinced that the Smart Bench will impact on creating an even stronger sense of community in the public space, as users will be motivated to talk and spend more time in the fresh air. This is another important act by which we support the City of Belgrade to keep up with smart cities around the world.”

Chila Ihas

President of the Executive Board of UniCredit Bank.

SSB1

Client:
Bank

Town/Country:
Belgrade, Serbia

Year:
2017



“Our goal is to enhance the access for tourists and residents alike to sites that treat cultural and historical heritage from a touristic point of view. The benches will help promote 20 of such locations we have mapped in BiH and Montenegro and will provide the necessary services to support these sites.”

Miljan Vuković,
Cultural Centre Trebinje.



Client:
City,
EU Fund

Town/Country:
Trebinje, BiH

Year:
2018



“The event is another major step aimed at establishing our networks with key players in the UK and build partnerships with several leading companies in the field of innovation and present to them the key opportunities to showcase their technologies and innovations and leverage the advanced facilities and unique framework of SRTI Park.”

Hussain Al Mahmoudi
CEO, SRTI Park

Client:
Smart City Organisation
(Innovation Exhibition and
Sharjah-United Kingdom
VIP Event)

Town/Country:
Sharjah, UAE

Year:
2018



“Within the framework of the Participatory Budgeting project, the votes of the majority of the citizens decided to place this solar smart bench today in Pirot. Today we are fulfilling the citizens' wishes and we believe this will be very useful for all residents and tourists who visit our city more often in recent years.”

Milica Golubović
Assistant of Mayor of Pirot



Client:
City

Town/Country:
Pirot, Serbia

Year:
2017



"We believe that innovations like this Strawberry Tree can bring a new quality to the lives of our fellow citizens. As the charger is equipped with mts mobile internet, the enhanced mobile network will provide all citizens with a whole new experience of web surfing in public areas."

Radovan Santovac
Head of Telekom Srbija Work Center in Kikinda

SSB1

Client:
Telecom Company

Town/Country:
Novi Sad, Serbia

Year:
2019



WHAT DO SMART CITY EXPERTS AND OUR CLIENTS SAY?



Strawberry energy is creating a digital smart city with Smart Bench Network that enhances the urban quality of life for citizens. This innovative project helps integrate renewable energy into the urban core, encouraging energy-saving behaviors among users. On a large scale, it will be the London's important back-up energy infrastructure creating more convenient and sustainable future of urban living.

Scott Buckler

Director of 4 ALL OF US



Smart Bench Network is an innovative retrofit of obsolete street furniture. I personally find very exciting. Not only does it enhance public spaces by delivering much-needed energy, WiFi and air quality data on the go, but this IoT infrastructure also brings socialisation in our urban spaces.

Being solar-powered, it also incentivises a green community culture in London. Their new sponsorship model makes the implementation of smart city solutions much easier while saving taxpayers' money.

Gemma Guilera

SME Programme Lead Future Cities Catapult





“

We are committed to making Islington a place where everyone can enjoy an excellent quality of life. These pioneering Smart Benches offer the best advances in smart technology and we are very pleased Islington is one of the first places in London to trial Smart Benches, and look forward to seeing how they benefit residents, workers and visitors alike.

Councillor Claudia Webbe

Islington Council's executive member for environment and transport



What Do Our Clients Say?



CANARY WHARF
GROUP PLC

This is not just about technology nor is it just a product. In my view it will be an interesting and ultimately very flexible piece of furniture that provides a service to the tech mobile consumers of today. Solar powered connectivity and amenity in a Smart City environment - what's not to like

Stephen Andrews

Canary Wharf Group London



TECH
LONDON
ADVOCATES

Cities will benefit greatly from the sensors in Strawberry Smart Bench, in terms of the information that they will capture. Having them in many different places will give us a map and picture of what is the quality of the environment like, what is the air quality like, and these will be important things for us to know and understand.

Russ Shaw

Tech London Advocates



“

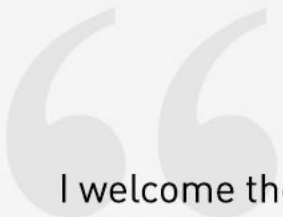
I'm very pleased that Lewisham is part of the start of this network of Smart Benches. Finding creative ways to make the most of our public spaces benefits local communities and attracts people to come and see the great things Lewisham has to offer.

Former Councillor Rachel Onikosi
Former Lewisham Cabinet Member for the Public Realm

“

Strawberry energy is creating Smart Cities by transforming street furniture into interactive devices.

The Duke of York
Pitch at Palace



I welcome the arrival of these new Strawberry Smart Benches, they will help us to offer people in Southwark modern technology that responds to contemporary needs.

Whenever I pass the ten that are already installed, they are busy with people resting, charging their phones and using the free WiFi. Additionally, council officers have been collecting air quality data from the benches; this will help us to build a picture of the problem and show us the way forward, here in Southwark.

Councillor Peter John
Leader of the Southwark Council



What Do Our Clients Say?



The Crown Estate is delighted to partner with Strawberry Energy to install these multifunctional smart benches across our retail schemes, as we continually strive to improve our shopping environments and respond to our consumers ever changing technology needs.

Jo Francis

Head of Retail Property Management for The Crown Estate

“
It's all about promoting green energy, it's all about solar power, teaching everyone and raising awareness...

So, all together I think it's 10 out of 10 a great idea.

Jing

>>



WHAT DO USERS SAY ABOUT SMART BENCHES?

<<

“
My battery is always dying on me and I always forget to bring a charger and those portable batteries I forget to charge or I leave them at home. Yeah, this is so amazing and I am really excited to see more of them in and out of London.

Verity



“
This new addition to our city is great example of technology use combined with contemporary design and overall a place to take a break and recharge your batteries.

M.D.

>>



WHAT DO USERS SAY ABOUT SMART BENCHES?



“
<<

My phone always dies when I go out so it's really useful thing to have. It's nice that it's near the shops, I feel like it matches the environment.

Deeba

“
It is a great use of technology and people can use it all the time. Come down, sit and just use it!
”

Mitchael

>>



WHAT DO USERS SAY ABOUT SMART BENCHES?



<<

“
This is the best thing that ever happened in Lewisham.
”

Ian R.

I find them to be really useful because I'm always running out of charge and it's so nice that I can go somewhere which isn't a cafe or a shop where I have to spend money. I can sit down and charge my phone here or use the wifi and it's so useful because they're dotted across the city and yeah they're just really easy to find.

Ramraj



WHAT DO USERS SAY ABOUT SMART BENCHES?





MILOŠ MILISAVLJEVIC
CEO, Strawberry Energy

BBC LONDON

bbc.co.uk/london

TimeOut
London

MEDIA COVERAGE

“

Good news for Candy Crush addicts, bad news for phone boxes: Islington has launched the first of London's solar powered 'smart benches', where you can charge your phone and access free WiFi.

Timeout

“

This is the future of benches in London.

BBC



EVERY smartphone user knows the dread of seeing their battery percentage plunge into single digits.

But the fear of running out of juice while out on the town could soon be a thing of the past.

FORD Smart Benches in Islington, Lewisham and Southwark will increasingly help ensure that walking will continue to be a key part of how Londoners enjoy their city.



Walking, along with driving and riding public transport, is part of how people get around in a city like London and FORD Smart Benches complement perfectly the increasingly connected lives we now lead.

The initial roll out of 20 smart benches in Islington, Lewisham and Southwark will double the number of the benches installed across the capital

MEDIA COVERAGE

Forbes

3,549 views | Jan 21, 2019, 01:52pm

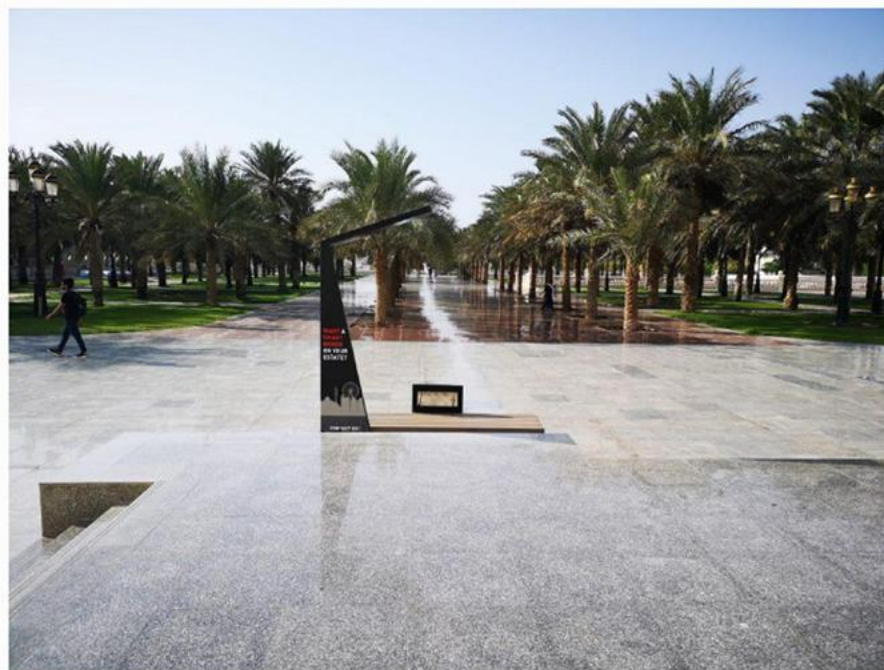
Serbia's Strawberry Energy To Expand Their Smart Benches In The Middle East and London



Rebecca Banovic Contributor

Venture Capital

I write about tech and business in Eastern Europe and The Balkans.



Strawberry Energy Smart Bench at the American University of Sharjah STRAWBERRY ENERGY

...**Milos Milisavljevic**, founder and CEO of Strawberry Energy, said:

“We made the decision to expand to the Middle-East market in mid-2018 and we partnered with UK’s Future Cities Catapult for market entry support...”

Have you ever been on the go and noticed that your smartphone is low on battery? Or your mobile internet access went over the limit and you can’t go online? The answer is: yes, most likely. But there is a solution. Enter: [Strawberry Energy](#), a Serbian crowd-funded start-up, that produces solar-powered smart benches with free Wi-Fi access, mobile

MEDIA COVERAGE



Strawberry energy is a well-established company known as a pioneer in creating and delivering smart and solar-powered urban furniture. Strawberry's purpose is to enhance the people's experience in public spaces and provide them with energy, connectivity and relevant local information on the go.

With award-winning products like **Smart Bench**, designed for a 21st-century mobile generation, Strawberry's vision is to digitally transform public spaces and improve urban living by making cities smarter, more sustainable, more connected and above all more convenient to live in.

www.strawberrye.com

ABOUT US